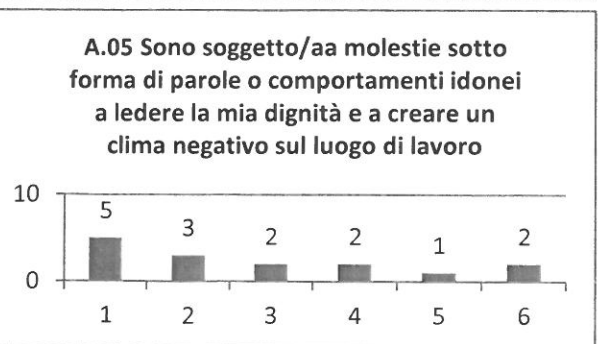
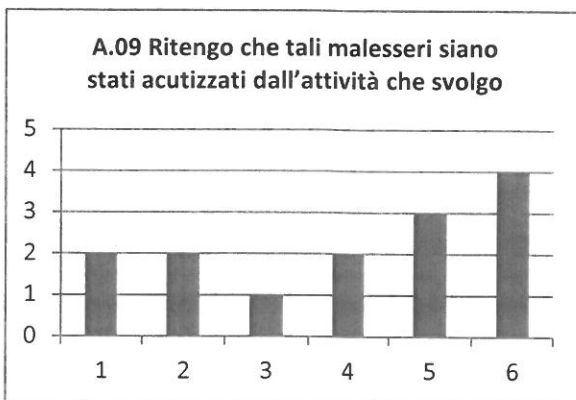
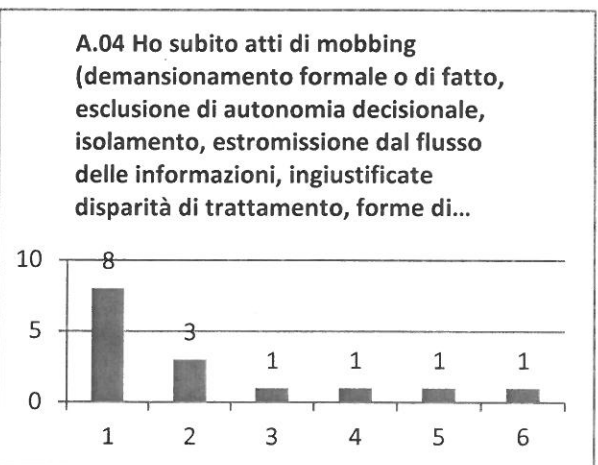
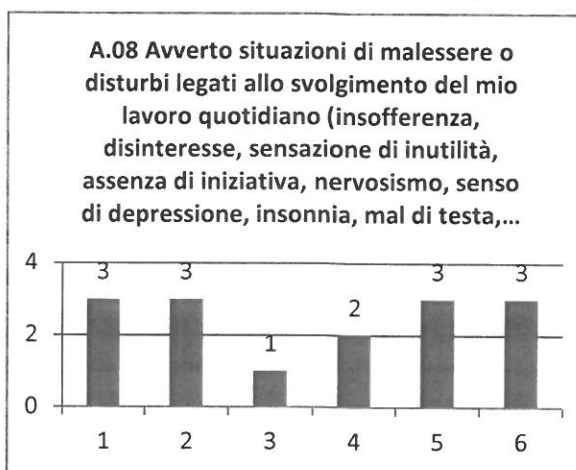
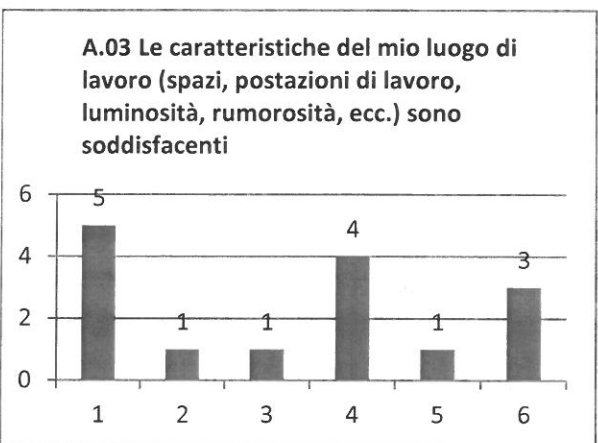
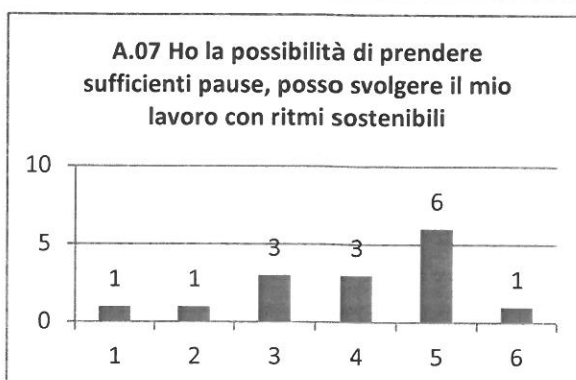
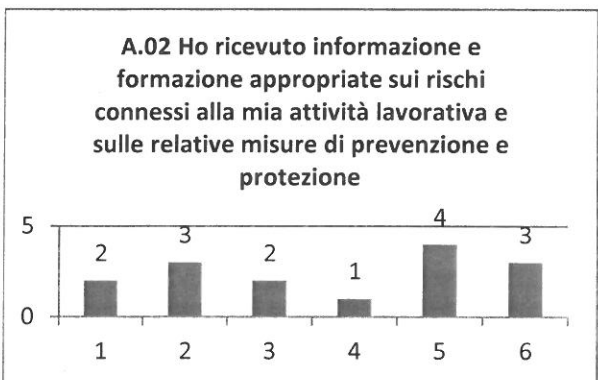
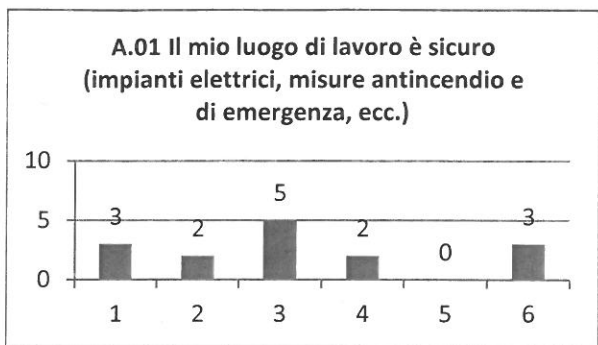


Questionario
Benessere Organizzativo

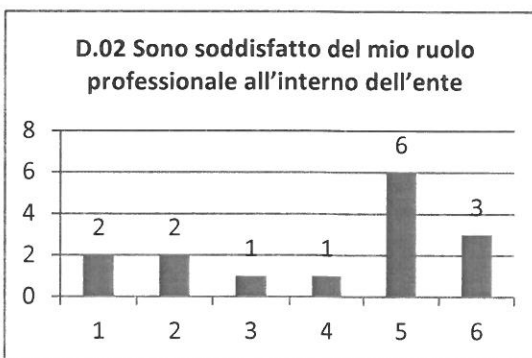
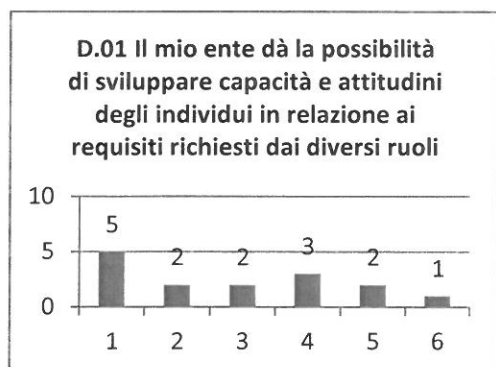
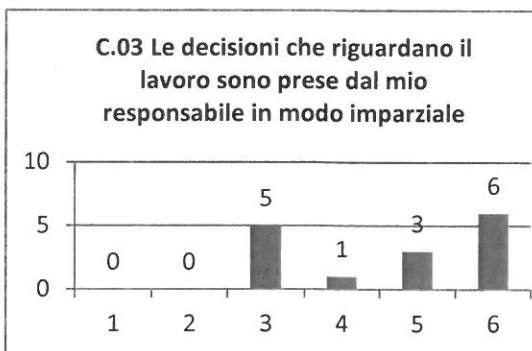
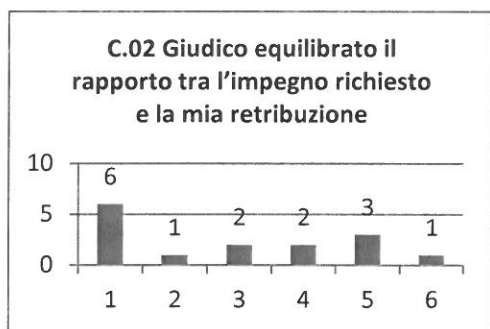
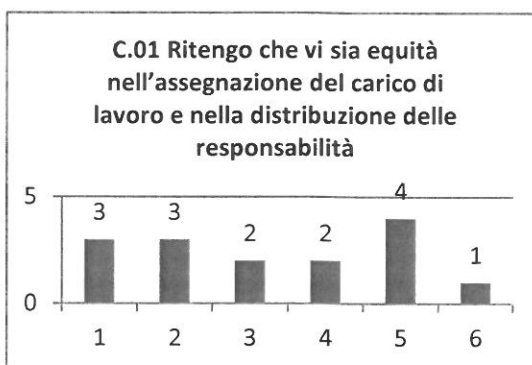
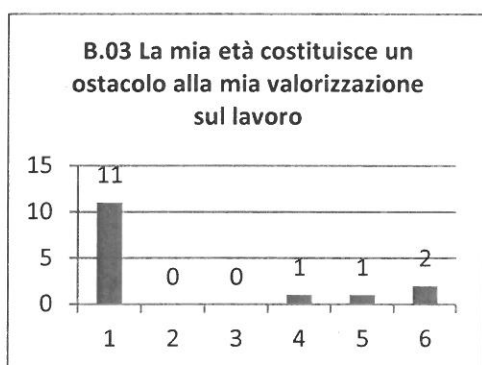
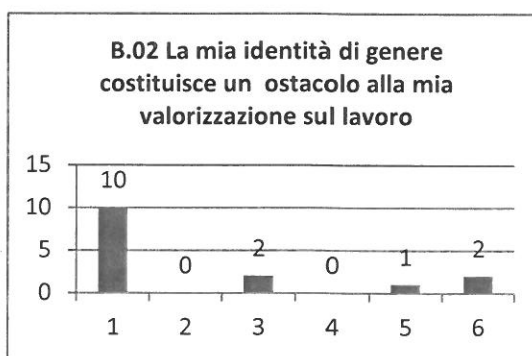
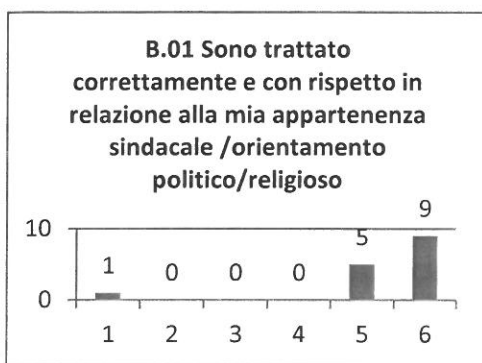
Quanto si trova in accordo con le seguenti affermazioni?

In totale disaccordo con l'affermazione 1	2	3	4	5	In totale accordo con l'affermazione 6
---	---	---	---	---	--



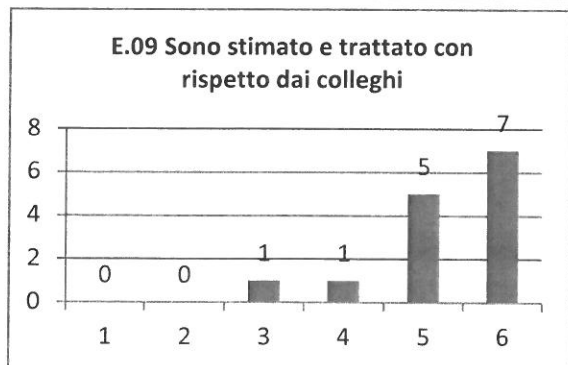
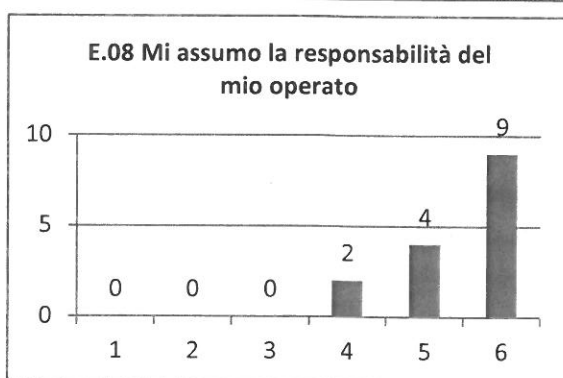
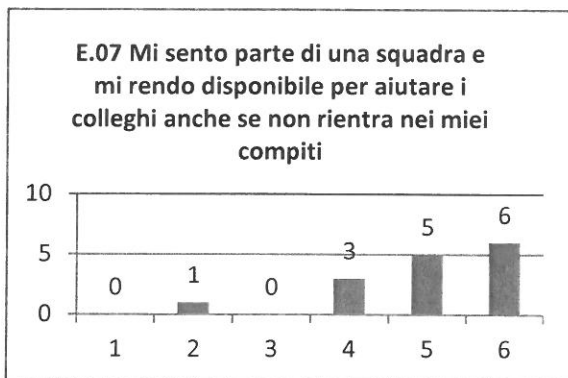
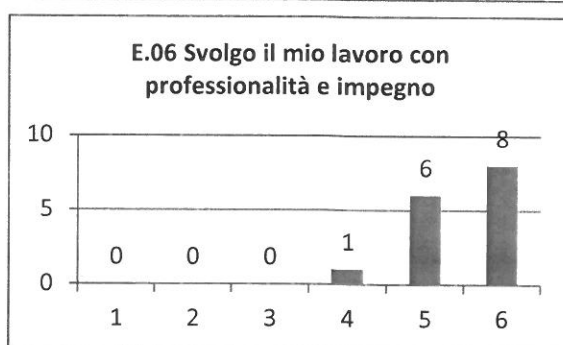
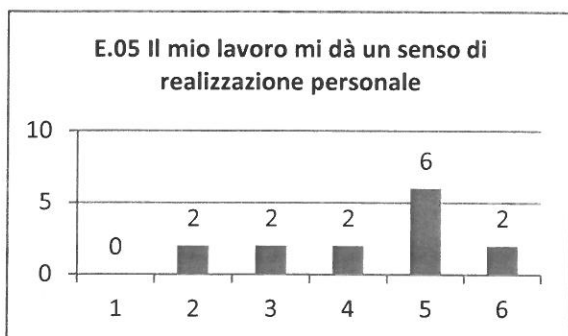
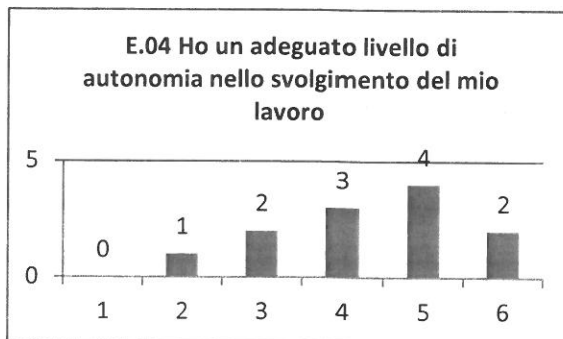
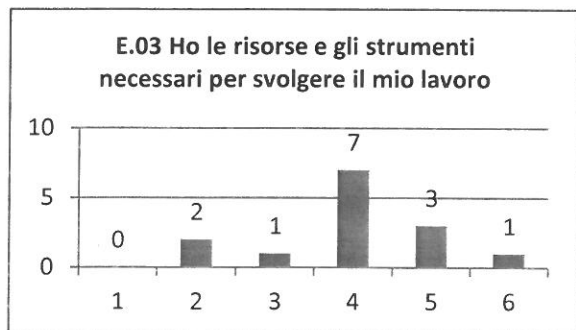
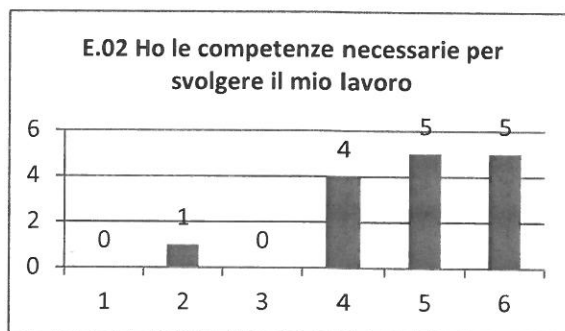
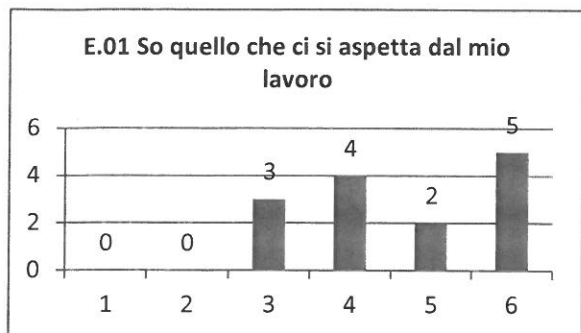
Quanto si trova in accordo con le seguenti affermazioni?

In totale disaccordo con l'affermazione	1	2	3	4	5	In totale accordo con l'affermazione	6
---	---	---	---	---	---	--------------------------------------	---



Quanto si trova in accordo con le seguenti affermazioni?

1 In totale disaccordo con l'affermazione	2	3	4	5	6 In totale accordo con l'affermazione
---	---	---	---	---	--



Quanto si trova in accordo con le seguenti affermazioni?

1 In totale disaccordo con l'affermazione

2

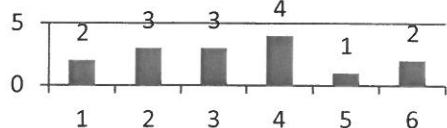
3

4

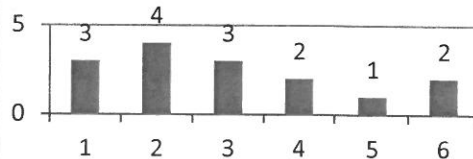
5

6 In totale accordo con l'affermazione

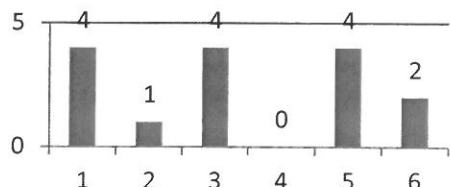
F.01 La mia organizzazione investe sulle persone, anche attraverso un'adeguata attività di formazione



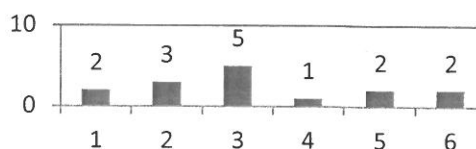
F.02 Le regole di comportamento sono definite in modo chiaro e vengono fatte rispettare da tutti



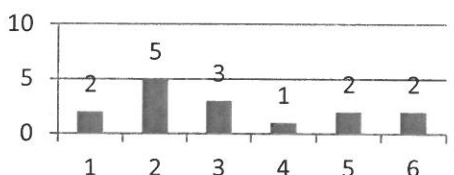
F.03 I compiti e ruoli organizzativi sono ben definiti



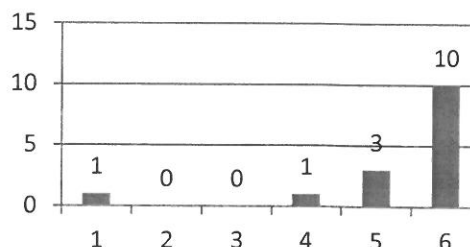
F.04 La circolazione delle informazioni all'interno dell'organizzazione è adeguata



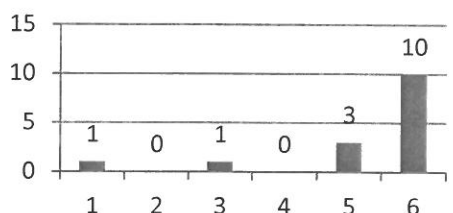
F.05 La mia organizzazione promuove azioni a favore della conciliazione dei tempi lavoro e dei tempi di vita



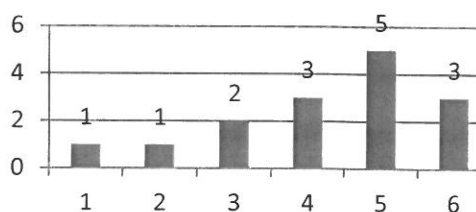
G.01 Sono orgoglioso quando il mio ente raggiunge un buon risultato



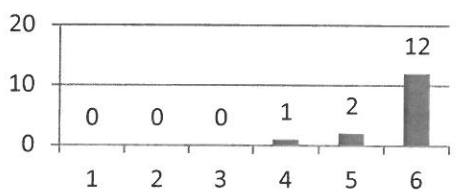
G.02 Mi dispiace se qualcuno parla male del mio ente



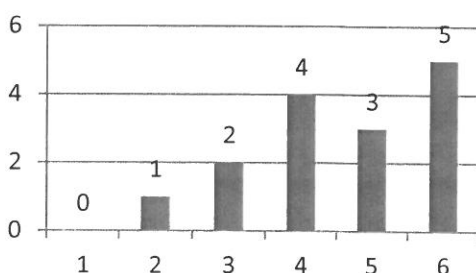
G.03 I valori e i comportamenti praticati nel mio ente sono coerenti con i miei valori personali



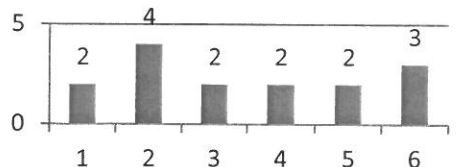
G.04 Il mio operato all'interno dell'ente ne tutela e ne rispetta l'immagine



G.05 La gente in generale pensa che l'ente in cui lavoro sia un ente importante per la collettività

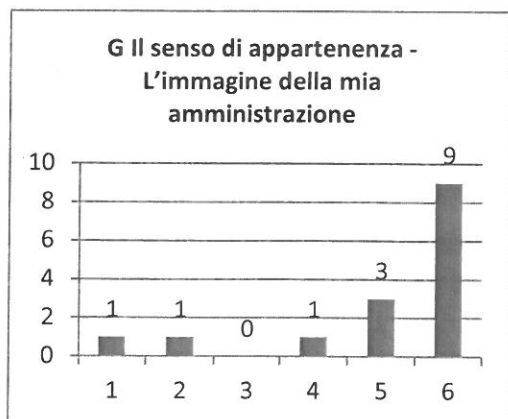
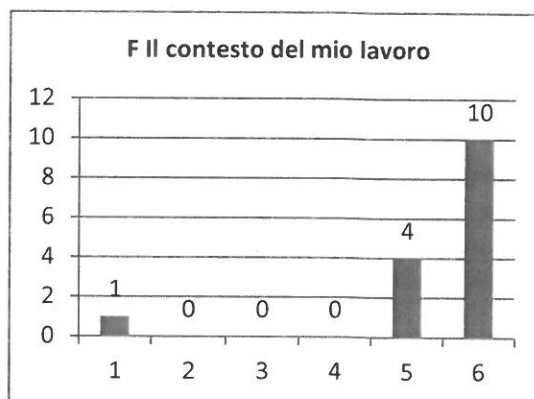
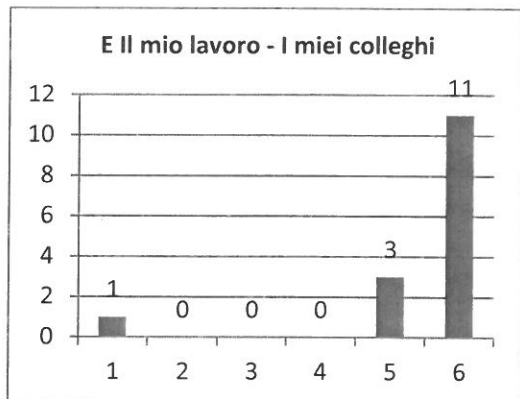
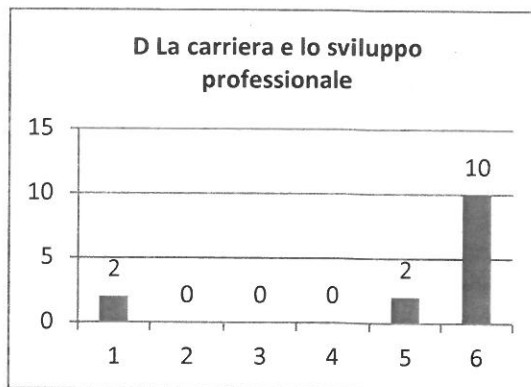
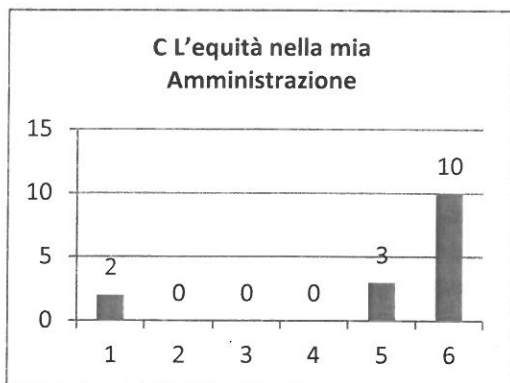
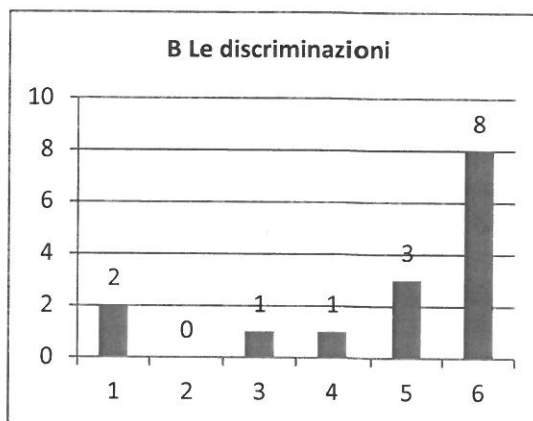
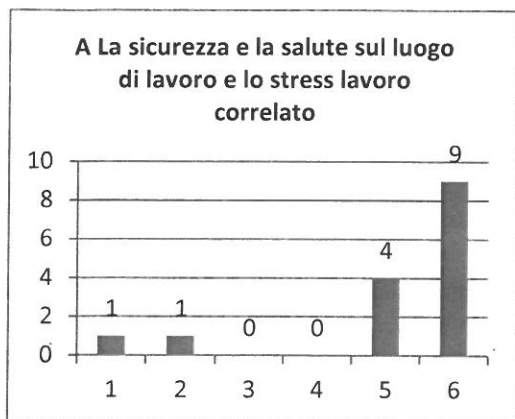


G.06 Se potessi, comunque cambierei ente



Quanto si trova in accordo con le seguenti affermazioni?

1 In totale disaccordo con l'affermazione	2	3	4	5	6 In totale accordo con l'affermazione
---	---	---	---	---	--



Quanto si trova in accordo con le seguenti affermazioni?

1 In totale disaccordo con l'affermazione

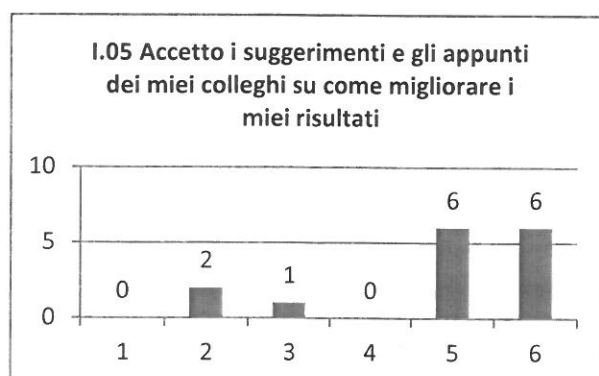
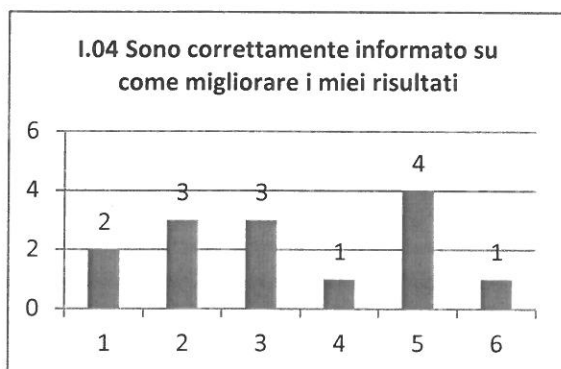
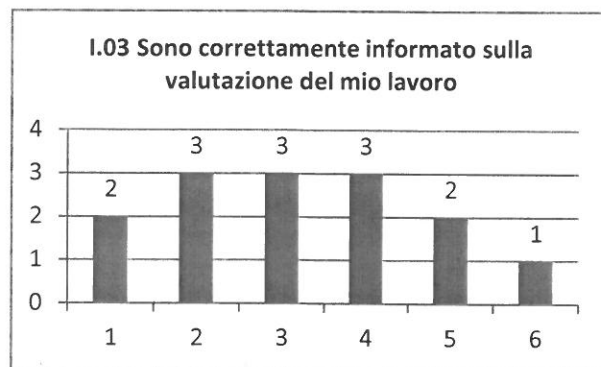
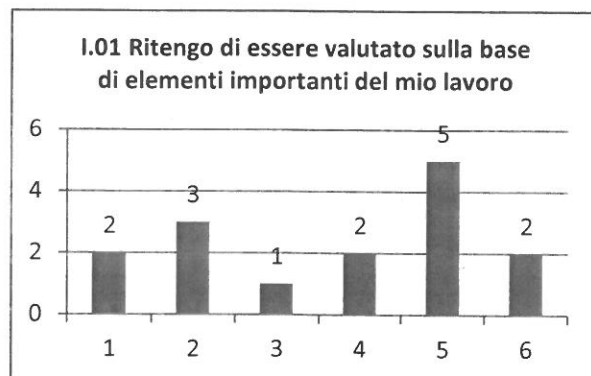
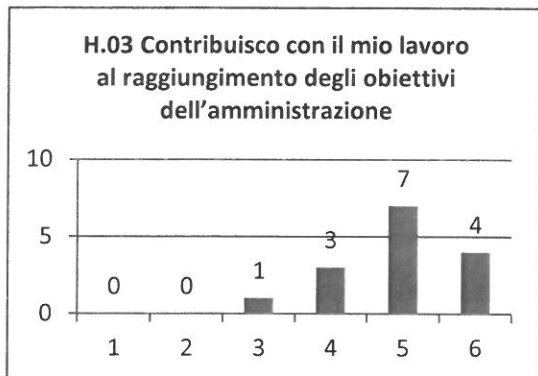
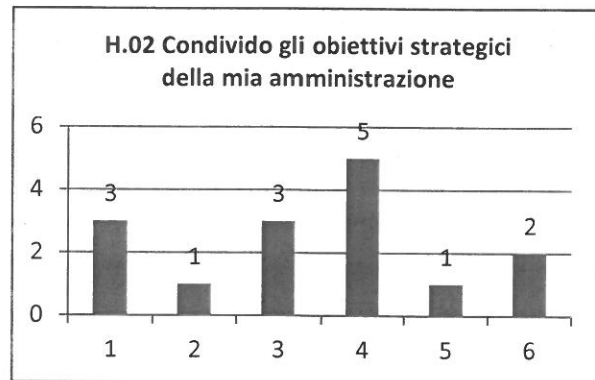
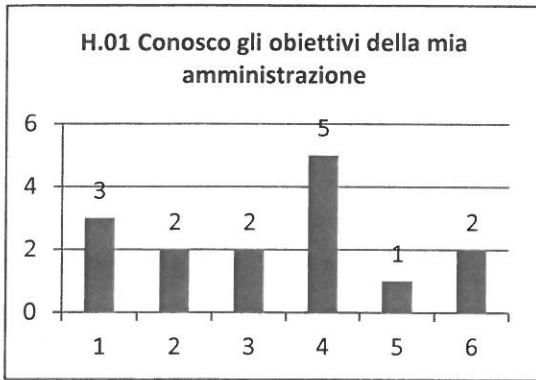
2

3

4

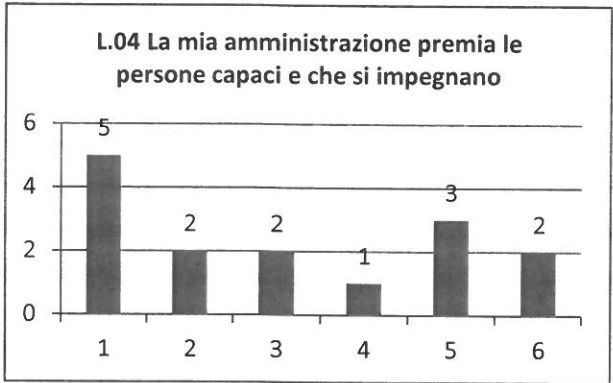
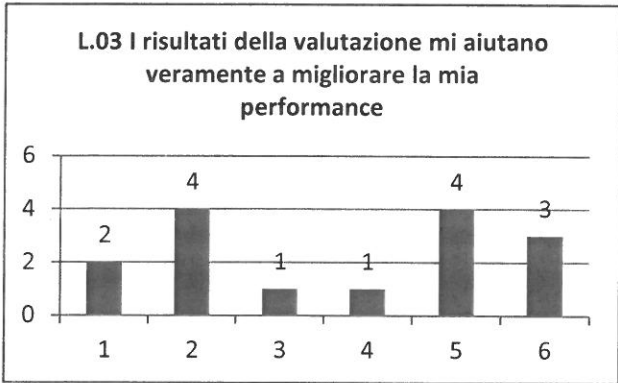
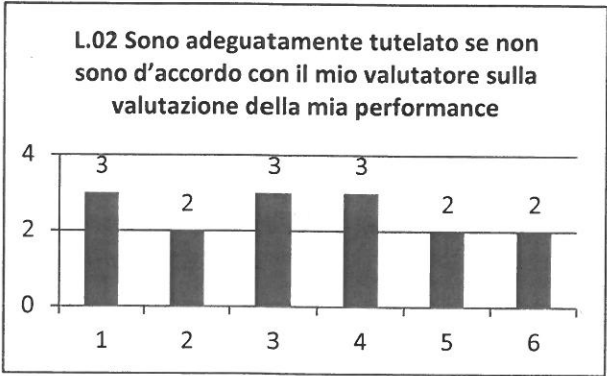
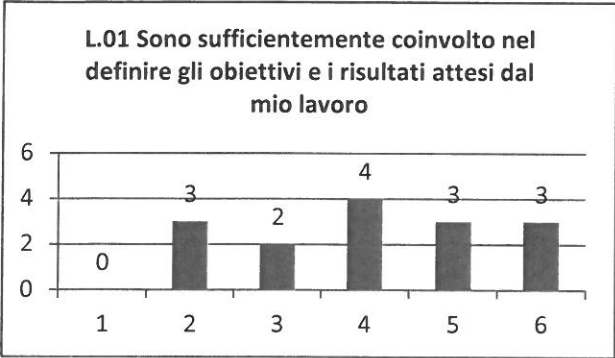
5

6 In totale accordo con l'affermazione



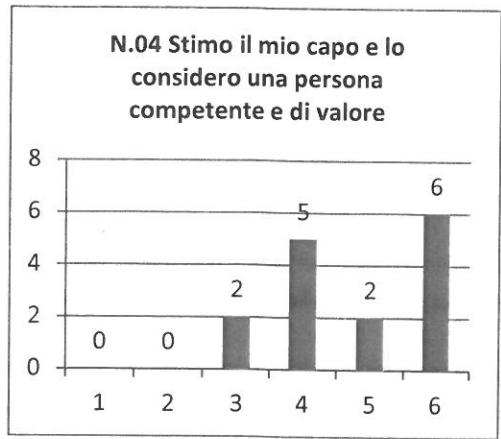
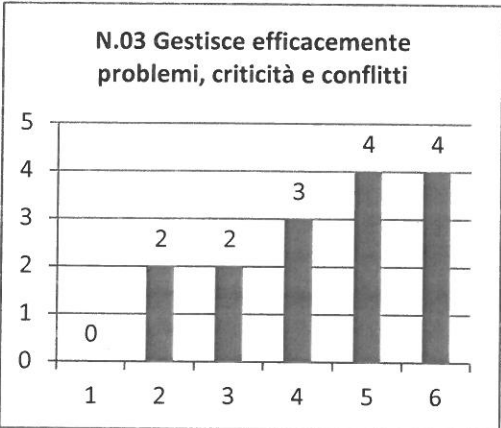
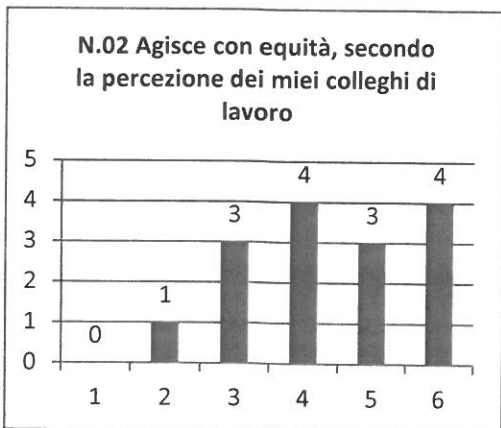
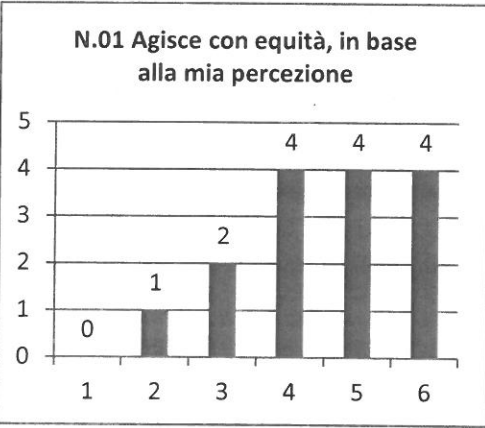
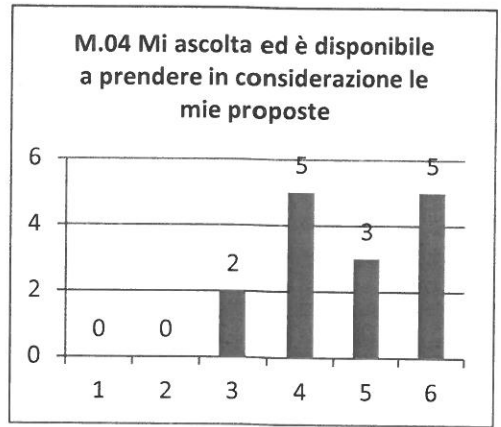
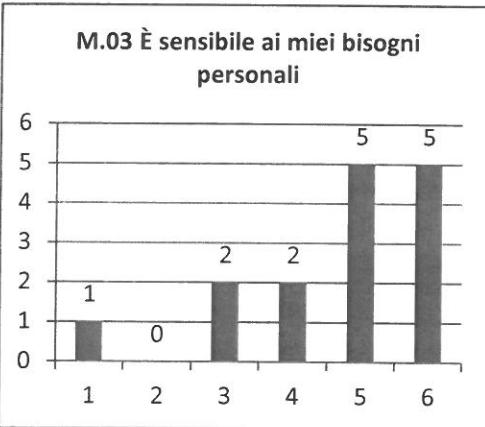
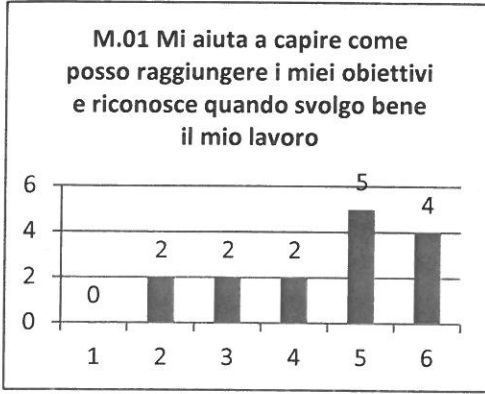
Quanto si trova in accordo con le seguenti affermazioni?

1 In totale disaccordo con l'affermazione	2	3	4	5	6 In totale accordo con l'affermazione
--	----------	----------	----------	----------	---



Quanto si trova in accordo con le seguenti affermazioni?

1 In totale disaccordo con l'affermazione	2	3	4	5	6 In totale accordo con l'affermazione
---	---	---	---	---	--



DATI ANAGRAFICI

